

Sansha®

ON STAGE WORLDWIDE
EN SCÈNE DE PAR LE MONDE



NEW
STUDIO LINE

NEW STUDIO LINE

by

Sansha®



SHAYLEE STUDIO

Y3553C

Girl's short sleeve leotard
Two front princess seams
Scoop front and back
Full front lining
Cotton / Lycra

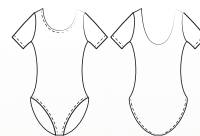
Sizes: B to J



Black

White

Powder
pink



SHANICE STUDIO

Y2556C

Girl's sleeveless leotard
Scoop neck and back
Full front lining
Cotton / Lycra

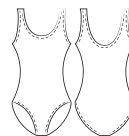
Sizes: B to J



Black

White

Powder
pink



NEW STUDIO LINE

by
Sansha®

STACIE STUDIO

Y1556C

Girl's camisole leotard
Scoop neck
Straight back
Full front lining
Cotton / Lycra

Sizes: B to J



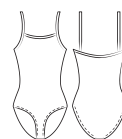
Black



White



Powder
pink



CANDY STUDIO

G222C

Crossed dancer's sweater
Long sleeves
The essentials to complete the dance clothes
Cotton/lycra

Sizes: B to H



Black



White



Powder
pink



NEW STUDIO LINE

by

Sansha®



JADE STUDIO

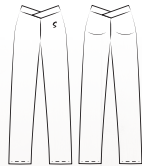
L0159C

Girl's long pants
Elastic V waist
Tone-on-tone "S" embroidery
Cotton / Lycra

Sizes: 2-6



Black



JAYA STUDIO

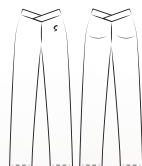
Y0159C

Girl's pants
Elastic waist
The flared cut, perfect for Jazz classes
Cotton / Lycra

Sizes: B to I



Black



JOANIE STUDIO

Y0656C

Girl's shorts
V cut at the waist
Tone-on-tone "S" embroidery
Cotton / Lycra

Sizes: B to G



Black



Sansha.com
franckduval@sansha.com

©copyright 1982-2020 Sansha® All rights reserved.

Dancers: Angelina I., Zumeiya T., Louise G., Isabel W., Jacqueline I., Alexandria Ina Rose O., Csilla Peszlen, Zorka Földesi, Gvendolin Nagy, Anisia Savina, Julia Golitsina

Photographer: Shamsheer Dhanoa, A.P. Merlo, Yulia Voynich

25
AA
NN
ANSHA
FIRST POSITION